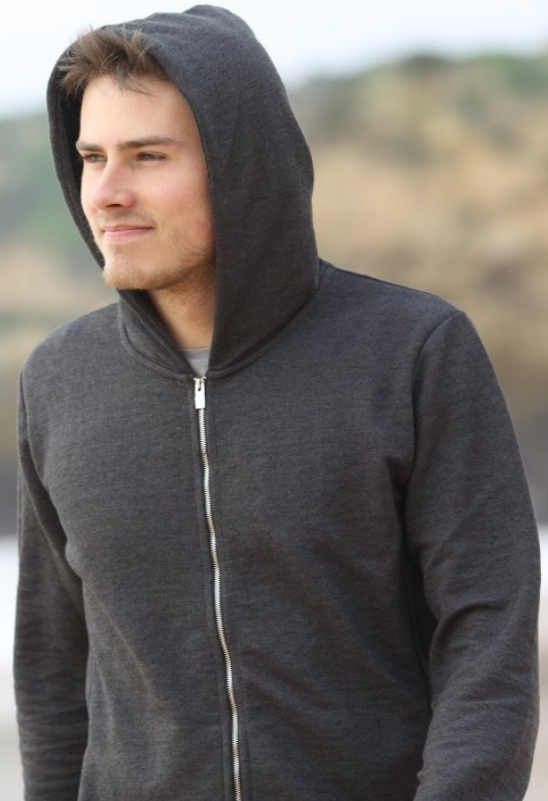


CHANGE

the SCRIPT

INFORMATION PACKET

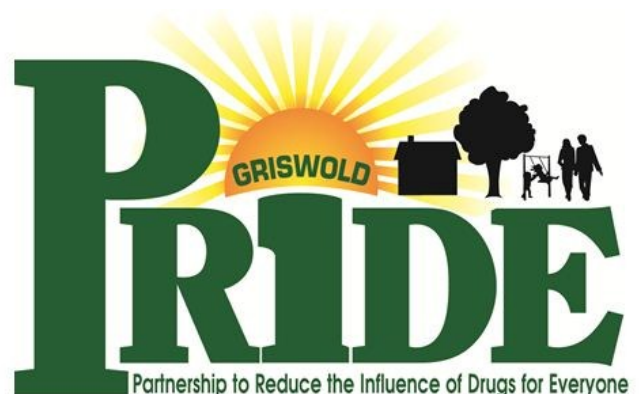


Opioid and Prescription Drug abuse is a serious public health issue that can be faced effectively with the right resources.

- **Change the Script** is a program that connects everyone whose lives are affected by the prescription drug crisis: healthcare professionals, treatment professionals, and the general public.

- **Change the Script** offers resources to help rewrite the story about how we deal with this issue, including prevention measures, treatment and recovery programs, prescriber education, safe storage and disposal information, and much more.

**For Resources go to:
www.drugfreect.org**



CHANGE the **SCRIPT**

**Stop PRESCRIPTION
DRUG PROBLEMS
before they start**



Be in the Know



What are opioids? Opioids, also known as opiates, are a type of drug that come from the opium poppy or are synthetically made by a drug company. Opioids can be illegal (heroin) or by prescription (painkillers). They work by lowering the number of pain signals your body sends to your brain. They also change how your brain responds to pain.

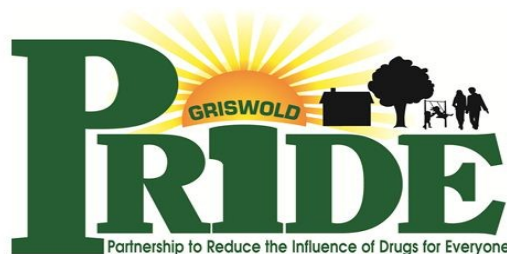
What is addiction? A **disease** that affects your brain and your behavior. At first, you have control over your choice to start using drugs. If you misuse a drug, its pleasurable effect eventually makes you want to keep using it. Over time, your brain actually changes in certain ways so that you develop a powerful urge to use the drug.

Opioid drugs include:

- Heroin (dope, junk)
- Fentanyl
- OxyContin® (OCs)
- Percocet®
- Vicodin®
- Methadone
- Buprenorphine
- Morphine
- Codeine



**For Resources go to:
www.drugfreect.org**



**Before OPIOIDS
have the
last word,**

**CHANGE
the SCRIPT**



Know what to look for

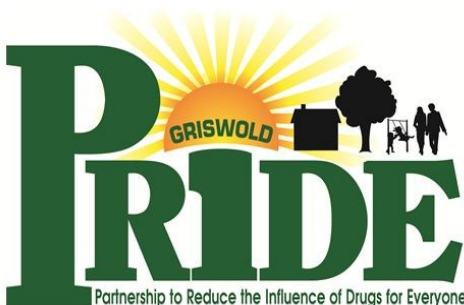
The signs and symptoms of opioid use disorder can be physical, behavioral, and psychological.

Symptoms of opioid abuse:

- Poor coordination
- Drowsiness
- Shallow or slow breathing
- Nausea, vomiting
- Constipation
- Physical agitation
- Slurred speech
- Pin point and fixed pupils
- Sleeping more or less than normal
- Mood swings
- Euphoria (feeling high)
- Irritability
- Depression
- Lowered motivation
- Anxiety attacks
- Poor decision making
- Abandoning responsibilities

Red Flags of opioid abuse:

- Money, change, credit cards, and small items missing
- Spoons missing
- Frequent and unnecessary trips out of the house
- Frequent and unexpected guests at the house
- Lack of personal hygiene
- Long-sleeved clothing, to cover arms/track marks, even in the hottest weather/conditions
- Burn holes in everything
- Pinprick holes and blood stains on clothing
- Lying/secretive behavior
- Missed school or work
- Sunglasses at night or inside
- Appetite and weight loss
- Paraphernalia: needles/needle caps; tiny black elastic bands; hollowed-out or disassembled pens; straws; small empty baggies (clear or colored; wax, plastic or paper); alcohol prep pads or wrappers; cotton balls; small pieces of cotton fiber—like from a cigarette filter



**For Resources go to:
www.drugfreect.org**

**Naloxone has a
serious side effect:
IT SAVES LIVES.**



Know what to do

An overdose of opioids requires immediate emergency medical treatment.

If you suspect someone has overdosed on opioids, call 9-1-1 immediately.

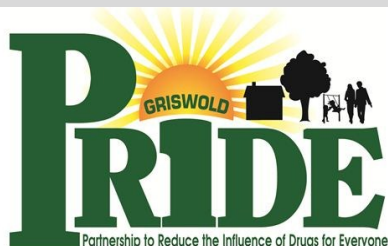
In CT, naloxone (Narcan) is available to keep on hand in case of an opioid overdose.

**If you're not on a first name basis
with Naloxone, you should be.**

- **Naloxone (or Narcan)** quickly reverses the deadly effects of a narcotic overdose.
- **It can easily be administered** by anyone with a simple autoinjector or nasal spray.
- **In Connecticut, you don't even need approval from a doctor** to administer Naloxone, and you're protected from prosecution under the state's Good Samaritan laws.
- **If you know someone in danger of an opioid overdose**, talk to your physician or pharmacist about gaining access to Naloxone.

Signs of an overdose:

- Loss of consciousness
- Unresponsive to outside stimulus
- Awake, but unable to talk
- Breathing is very slow and shallow, erratic, or has stopped
- For lighter skinned people, the skin tone turns bluish purple, for darker skinned people, it turns grayish or ashen.
- Choking sounds, or a snore-like gurgling noise
- Vomiting
- Body is very limp
- Face is very pale or clammy
- Fingernails and lips turn blue or purplish black
- Pulse (heartbeat) is slow, erratic, or not there at all



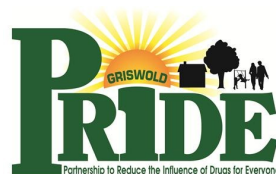
**For Resources go to:
www.drugfreect.org**

Home Medicine Inventory Card

[illegible]

CHANGE the SCRIPT

For Resources go to:
www.drugfreet.org



Would you give your child **HEROIN** for a sports injury?

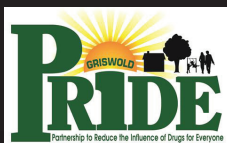


**Ask Your Doctor How Prescription Drugs
Can Lead to Heroin Abuse.**



BEFORE THEY PRESCRIBE - YOU DECIDE.™

AmericanMedicineChest.com



All names, tag lines, artwork and other content are the Intellectual Property of Partnership for a Drug-Free New Jersey.
© 2016 Partnership for a Drug-Free New Jersey

✓ 3 TIPS TO...

Obtain Naloxone at Local Pharmacies



1.



Call the Pharmacy before arriving. Ask:

- *Is a prescribing pharmacist on duty? (Not all pharmacists are certified to prescribe)
- *When will a prescribing pharmacist be available?
- *Which Naloxone product does the pharmacy have in stock or are available to order?

2.



Your doctor can prescribe it, but there are other options too.

- *Naloxone can be dispensed with a prescription from your doctor **OR** a prescribing pharmacist can write a prescription and dispense it

3.



Insurance Considerations

- *Many insurance companies will cover a Naloxone prescription, even if you are a concerned family member or friend who wants to have in on hand in case of emergency.
- *An Insurance Prior Authorization, a documentation sent from the pharmacy to the doctor for permission to cover the medication, may be necessary. Please be aware this process may take some time.

Griswold Area Pharmacies, certified to PRESCRIBE and DISPENSE Naloxone

RITE AID PHARMACY

Phone:(860) 376-1206
Location: 27 Main St
Jewett City CT 06351

JEWETT CITY PHARMACY

Phone:(860) 376-4468
Location: 78 Main St.
Jewett City, CT 06351

CVS PHARMACY

Phone: (860) 823-2961
Location: Target, 195 River Rd.
Lisbon, CT 06351

CVS PHARMACY

Phone: (860) 564-2111
Location: 10 Lathrop Rd.
Plainfield, CT 06374



Uniting the citizens of Griswold in a partnership to create and foster a safe, drug-free environment for the entire community